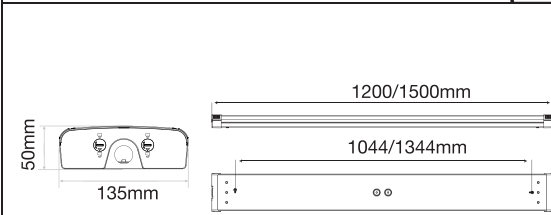
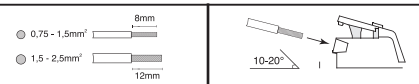
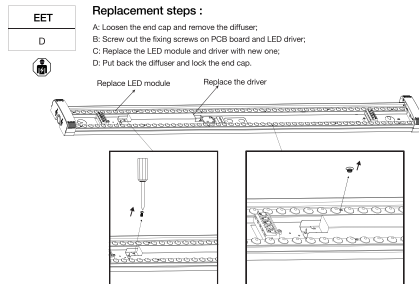
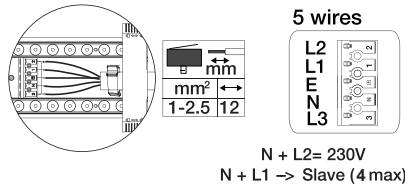
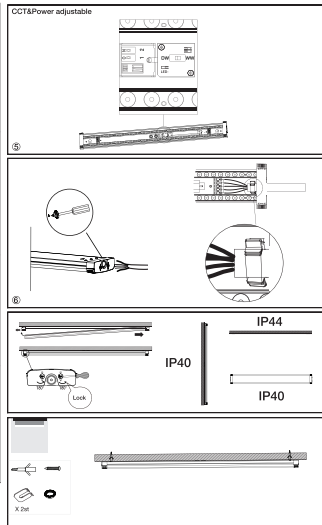
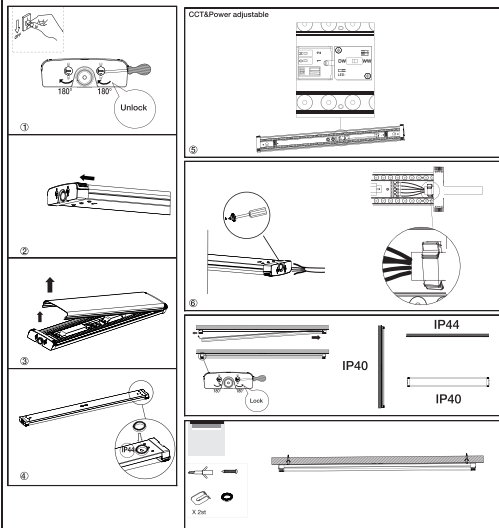
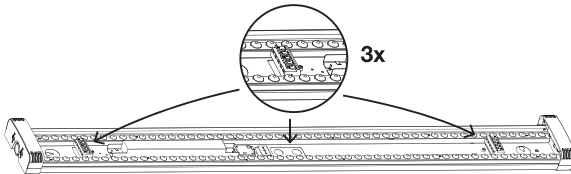
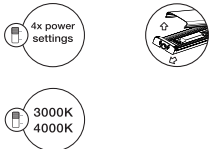


UCL

SLC1520
SLC1521

SLC1522
SLC1523

SLC
Scandinavian
Lighting Concept



NO: Må installeres av godkjent installatør
EN: Only to be installed by an authorized electrician
DE: Nur von einer autorisierten Elektrofachkraft installieren lassen
FI: Asenna vain valtuutettu sähköasentaja
FR: Seulement pour être installé par un électricien autorisé
IS: Aðeins skal setja upp af viðurkenndum rafvirkri
ES: Solo para ser instalado por un electricista autorizado.
IT: Solo per essere installato da un elettricista autorizzato

NO: Slå av strømmen før montering
EN: Power off before installing
DE: Schalten Sie vor der Installation die Stromversorgung aus
FI: Katkaise virta ennen asennusta
FR: Couper le courant avant d'installer
IS: Slökktu á orku áður en þú setur upp
ES: Apague la alimentación antes de instalar
IT: Spegnerne l'alimentazione prima di installare

Sensor

THE LIGHT GROUP AS | Tlf.: +47 38 00 21 01 | E-Mail: post@tlg.no
 Mjavannsvegen 175 | 4628 | Kristiansand S | Norway

THE LIGHT GROUP GmbH | Phone: +49 511 807 486 10 | E-Mail: info@tlg.no
 Am Schafbrinke 62 | 30519 | Hannover | Germany

rev.04.09.23

UCL

SLC1520
SLC1521

SLC1522
SLC1523

SLC
Scandinavian
Lighting Concept

((())) Sensor

HAISEN

HD01S-6 CE RED

- Automatic On/off control with Daylight sensor.
- Optional detection range, holdtime and daylight threshold .
- Compact sized particularly suitable for Ceiling lights or Bulkhead.
- Loop in and loop out for easy installation.
- 5 year limited warranty.

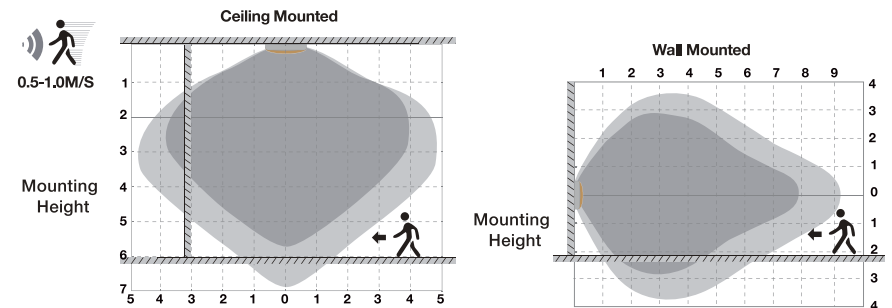
Note! The microwave sensor is primarily designed for larger rooms. If used in smaller rooms, there is a risk that the luminaire may turn on if movement is detected within the detection area, which may extend beyond the room's exterior. Microwaves are not impeded by walls or doors but may reduce the detection range. Therefore, we recommend testing the functions and informing daily users about the sensor's settings.

Technical Data

Operating Voltage 220-240VAC 50/60Hz	Microwave Frequency 5.8GHz±9MHz	Operating Temperature -20°C~+50°C
Stand-by Power ≤5W	Microwave power ≤12mW	Motion detection 0.5~1.5m/s
Direction Area 10%/50%/75%/100%	Mounting height Max.6m/16.0ft	IP Rating IP20
Head Size 56/106/156mm/15mm	Detection Range Max.4/2m/3.6/17ft	Warranty 5 years
Beam Angle 25/30/40/50/60/75/90/100°	Beaming capacity Max.400W Max.800W Max.100W (Control panel) Max.200W (remote control panel)	



Detection patterns



Highest mounting height is 6m

This figure indicates the maximum distance at the highest mounting height with 100% sensitivity.

THE LIGHT GROUP AS | Tlf.: +47 38 00 21 01 | E-Mail: post@tlg.no
 Mjavannsvegen 175 | 4628 | Kristiansand S | Norway

THE LIGHT GROUP GmbH | Phone: +49 511 807 486 10 | E-Mail: info@tlg.no
 Am Schafbrinke 62 | 30519 | Hannover | Germany

rev.04.09.23

Setup

Switch UP
 Switch DOWN

5 + 6

5	6
<input type="checkbox"/>	Disable
<input checked="" type="checkbox"/>	50lux
<input type="checkbox"/>	10lux
<input type="checkbox"/>	2lux

Daylight threshold

Definition of the ambient brightness; only when the ambient brightness is lower than the preset specific lux amount, the sensor will work; when it's preset as "disable", the sensor works everytime it detects motion regardless the ambient brightness.

3 + 4

3	4
<input type="checkbox"/>	5s
<input checked="" type="checkbox"/>	90s
<input type="checkbox"/>	5min
<input type="checkbox"/>	15min

Hold-time

The period of light keeping 100% brightness after moving objects leave the detection area.

1 + 2

1	2
<input checked="" type="checkbox"/>	100%
<input type="checkbox"/>	75%
<input type="checkbox"/>	50%
<input type="checkbox"/>	10%

Detection area

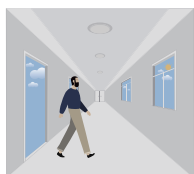
In this area, movement will be detected and able to trigger the sensor. 100% detection area is also known as the strong sensitivity.

Test settings:

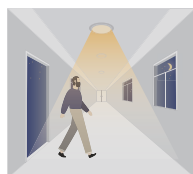
=10% + 5 sec + Disable 1 2 3 4 5 6

Performance

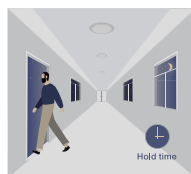
1. Automatically ON/OFF function



With sufficient daylight, even when motion detected, light remains OFF.



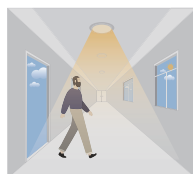
With insufficient daylight, the sensor turns light ON when motion gets detected.



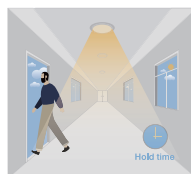
The sensor turns OFF light automatically after the holdtime when there's no motion detected.

2. Daylight Disable

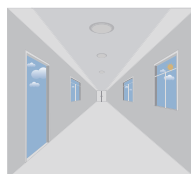
When daylight threshold is preset as "disable", the sensor turns light ON when motion gets detected, and OFF after hold time



The sensor turns light ON when motion gets detected.



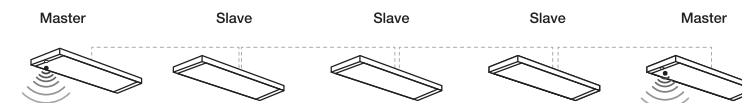
The sensor keeps light ON for holdtime period after motion leaves.



The sensor turns OFF light automatically after the holdtime.

Master / Slave

Max 4 slaves pr. master



Installation precautions

1. Microwave sensor can be installed in any lamp except the one with full metal shell.
2. The detected surface cannot be shielded by metal objects.
3. Make sure the microwave module is completely exposed outside.
4. The detection surface of the sensor module shall be installed facing the detection area.
5. Should be kept away from the driver to avoid interference generation and lamp flashing.
6. Wiring must be strictly in accordance with the wiring diagram to avoid short circuit.

User Notes

1. Microwave can penetrate walls or glass thinner than <20mm and attenuate if thicker than <20mm.
2. The driver voltage shall be stable and float within 10%.
3. Detection area will be affected by speed of motion, mounting height and movement volume.
4. Conduct test on sunny days without the lampshade which will affect the tested lux value.

Application Environment

1. Suitable for indoor installation to avoid false triggering due to external factors such as rain, wind or tree swing.
2. Shall not be installed in the place with all four metal shelters and small space (such as galvanized-iron roof).
3. Shall not be mounted installation, so as to avoid false trigger caused by the lamp itself shaking.
4. Shall not be installed next to large operating machines such as ventilator/ceiling fan to avoid false triggering caused by machine vibration.



Attention

1. Please read the instructions carefully before using this product and keep it well for all users to read at any time.
2. The sensor should be installed by qualified electrician and ensure power is off before the installation.
3. We reserve the right to modify any incorrect text, image and necessary technical parameters.
4. Any unauthorized modification is forbidden, otherwise all guarantees will be immediately invalid.